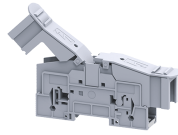


PTB35/50SH



connectwell
THE RIGHT CONNECTION

50 sq.mm Stud Type Power Terminal Blocks with Hinged Protective Cover

PTB series Terminal Blocks are preferred for application using wires of large cross section. The Wire is crimped to a ring / fork lug and is screwed on to the flat current bar of the Terminal Block. Specially designed Mounting Feet hold the Terminal Block rigidly on to the Mounting Rail. Two Lugs of the rated cross section can be connected to the Terminal Block, without sacrificing the safety of the Terminal Block. In PTB35SH, PTB70SH Terminal Blocks a hinged protective cover makes the Terminal Block shock proof (finger safe) and has marker recess to accept marking tag.

TECHNICAL DATA

Rated Voltage	1000 V
Rated Current	150 A
Tightening Torque	3 Nm
Housing Material	Polymide
Product Function	Power Terminal Block
Wire Entry Orientation	Side Entry
Mounting Possibility	DIN 35/DIN 35-15 Rail
Stud Size	M6
Operated by	Nut Driver
Rated Surge Voltage	8 KV
Pollution Degree	3

CONNECTION DATA

Conductor Cross Section Stranded min.	1.5 mm ²
Conductor Cross Section Stranded max.	50 mm ²
Conductor Cross Section AWG/Kcmil min	8 AWG
Conductor Cross Section AWG/Kcmil max	2 AWG
Conductor Cross Section Stranded with Ferrule/Lug min	1.5 mm ²
Conductor Cross Section Stranded with Ferrule/Lug max	50 mm ²
2 Conductors with same Cross Section Stranded min	1.5 mm ²
2 Conductor with same Cross Section Stranded max	50 mm ²

DIMENSIONS

Height with DIN 35 x 15 mm rail	73.6 mm
Height with DIN 35 x 7.5 mm rail	66.5 mm
Length	169 mm
Width (Thickness)	25 mm

ORDERING INFORMATION

CAT. NO.	DESCRIPTION	STD. PACK
PTB35/50SH	50 sq.mm Stud Type Power Terminal Block in Grey colour with Hinged Protective Cover	10
PTB35/50SHR	50 sq.mm Stud Type Power Terminal Block in Red colour with Hinged Protective Cover	10
PTB35/50SHY	50 sq.mm Stud Type Power Terminal Block in Yellow colour with Hinged Protective Cover	10
PTB35/50SHBU	50 sq.mm Stud Type Power Terminal Block in Blue colour with Hinged Protective Cover	10

ORDERING INFORMATION

CAT. NO.	DESCRIPTION	STD. PACK
PTB35/50SHGN	50 sq.mm Stud Type Power Terminal Block in Green colour with Hinged Protective Cover	10
PTB35/50SHBK	50 sq.mm Stud Type Power Terminal Block in Black colour with Hinged Protective Cover	10

ACCESSORIES

IMAGES	CAT. NO.	DESCRIPTION	STD. PACK
	CA701-1M	Din 35 Rail unslotted 1 meter	50
	CA701-2M	Din 35 Rail unslotted 2 meter	50
	CA701-2M-S	Din 35 Rail slotted 2 meter	50
	CA701-1M-S	Din 35 Rail slotted 1 meter	50
	CA701-15-1M	Din 35 Rail 15 deep unslotted 1 meter	50
	CA701-15-1M-S	Din 35 Rail 15 deep slotted 1 meter	50
	CA701-15-2M	Din 35 Rail 15 deep unslotted 2 meter	50
	CA701-15-2M-S	Din 35 Rail 15 deep slotted 2 meter	50
	CA102	End Clamp in Polyamide suitable for Din32 / Din35 / Din35-15 Rails	50
	CA202	End Clamp in Polyamide suitable for Din 35 / Din 35-15 Rails	25
	CA703/9	Permanent Shorting Links for 2 way shorting.	10
	CA704/9	Permanent Shorting Links for 3 way shorting.	10
	CA705/9	Permanent Shorting Links for 4 way shorting.	10
	CA509/K9	Blank Marking Tag	100

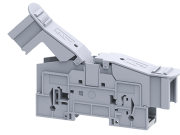
APPROVALS



NOTES

The Rated current is with the use of copper (Cu) conductor/Wire

PTB35/50SH



connectwell
THE RIGHT CONNECTION

RATINGS AS PER STANDARDS

STANDARDS	UL 1059	CSA C.22.2 No:158	IEC/EN60947-7-1
Approvals	UL	CSA	CE
Conductor Cross Section Stranded min.	8 AWG	8 AWG	1.5 mm ²
Conductor Cross Section Stranded max.	2 AWG	2 AWG	50 mm ²
Rated Voltage	600 V	600 V	1000 V
Rated Current	115 A	115 A	150 A
Tightening Torque	27 lb-in	27 lb-in	3 Nm
STANDARDS	EN60079-7		
Approvals	ATEX		
Conductor Cross Section Stranded min.	16 mm ²		
Conductor Cross Section Stranded max.	50 mm ²		
Rated Voltage	1100 V		
Rated Current	126 A		
Tightening Torque	3 Nm		
Operating Temperature Range	-40 to +85 °C		