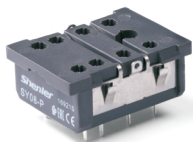


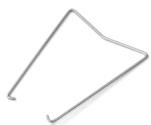
## Characteristics

SY08-P

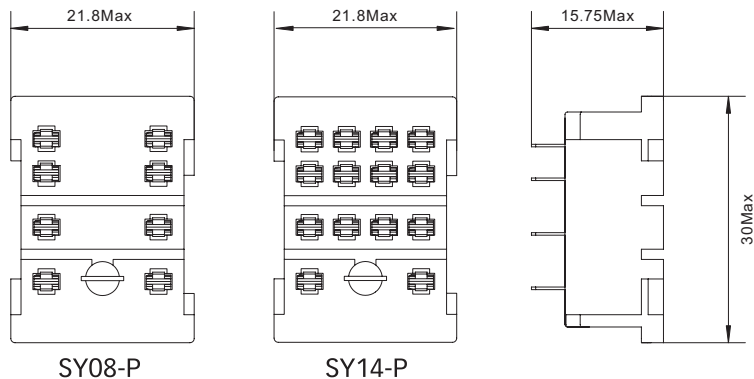


SY14-P



Type		SY08-P	SY14-P
Nominal load	Current	A	10
	Voltage	V	300
Dielectric strength	V/min	2000	
Ambient temperature	°C	-40~+85	
Unit weight	g	7	7
Accessories			
Socket	Metal clip		
SY08-P	 SY36M		
SY14-P			

## Dimensions (mm)



## Connection Diagrams

